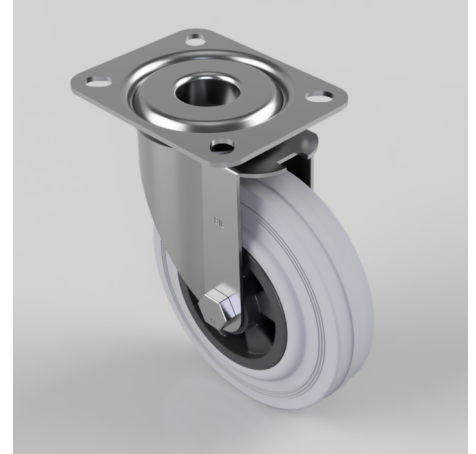


Grey Rubber Polypropylene Plate Swivel Castor 125mm 100kg Load

Product code: BZMM125GRB

Pressed steel swivel castor, fitted with a top plate, grey rubber on black polypropylene centered wheel, with roller bearings, 125mm wheel diameter, 37.5mm tread width, 155mm overall height, 105 x 85mm top plate, 80 x 60mm bolt holes, 100kgs capacity.



Diameter (mm)	125
Castor Type	Swivel
Fixing Option	Plate
Height (mm)	155
Wheel Material	Rubber on Polypropylene
Colour / Shore Hardness	Grey Rubber on Polypropylene Rim / 85 Shore A
Temperature Resistance	-20 °C TO +60 °C
Bearing Type	Roller
Load Capacity (kg)	100
Tread (mm)	37.5
Swivel Radius (mm)	95
Plate Size (mm)	105 X 85
Hole Centres (mm)	80 X 60
Top Plate Thickness (mm)	2.5
Fork Thickness (mm)	2
To Suit Fixing Bolt (mm)	8