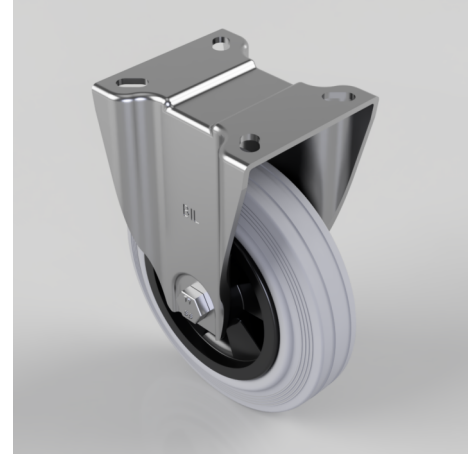


Grey Rubber Polypropylene Plate Swivel Castor 150mm 110kg Load

Product code: BZPHLF150GRB

Pressed steel fixed castor with a top plate fixing fitted with a Grey Rubber tyred black polypropylene centred wheel with a roller bearing bore. Wheel diameter 150mm, tread width 40mm, overall height 190mm, top plate 105mm x 92mm, hole centres 80mm x 60mm. Load capacity 110Kg.



Diameter (mm)	150
Castor Type	Fixed
Fixing Option	Plate
Height (mm)	190
Wheel Material	Rubber on Polypropylene
Colour / Shore Hardness	Grey Rubber on Polypropylene Rim / 85 Shore A
Temperature Resistance	-20 °C TO +60 °C
Bearing Type	Roller
Load Capacity (kg)	110
Tread (mm)	40
Plate Size (mm)	105 x 92
Hole Centres (mm)	80 X 60
Top Plate Thickness (mm)	3.5
Fork Thickness (mm)	3.5
To Suit Fixing Bolt (mm)	8

BIL GROUP LTD

Porte Marsh Road, Calne, Wiltshire, SN11 9BW

Registered in England No: 2603821

VAT Reg: GB572705729

