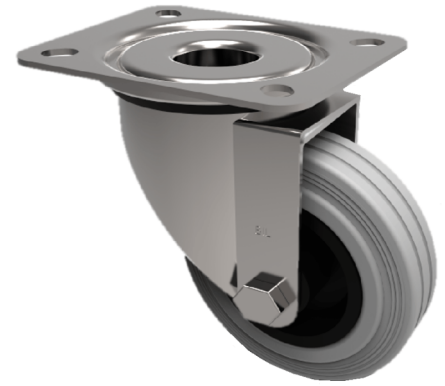


Grey Rubber Polypropylene Plate Swivel Castor 200mm 205kg Load

Product code: SSMM200GR



Grade 304 Pressed stainless steel swivel castor, fitted with a grey rubber tyre on a black nylon centred wheel with a plain bore. 200mm wheel diameter, 50mm tread width, 235mm overall height, 140mm x 110mm top plate, 105 x 80/75mm hole centres with a load capacity of 205kgs

| | |
|--------------------------|---|
| Diameter (mm) | 200 |
| Fixing Option | Plate |
| Castor Type | Swivel |
| Height (mm) | 235 |
| Wheel Material | Rubber on Polypropylene |
| Colour / Shore Hardness | Grey Rubber on Polypropylene Rim / 85 Shore A |
| Bearing Type | Plain |
| Tread (mm) | 50 |
| Fork Thickness (mm) | 3 |
| To Suit Fixing Bolt (mm) | 10 |
| Load Capacity (kg) | 205 |
| Temperature Resistance | -20 °C TO +60 °C |
| Plate Size (mm) | 135 x 110 |
| Hole Centres (mm) | 105 x 80 |
| Top Plate Thickness (mm) | 3 |
| Swivel Radius (mm) | 153 |

BIL GROUP LTD

Porte Marsh Road, Calne, Wiltshire, SN11 9BW

Registered in England No: 2603821

VAT Reg: GB572705729

