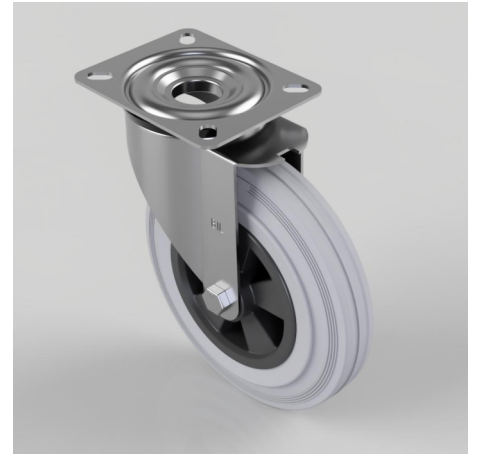


Grey Rubber Polypropylene Plate Swivel Castor 200mm 205kg Load

Product code: BZMM200GRB

Pressed steel swivel castor with a top plate fixing fitted with a grey rubber tyre black polypropylene centred wheel with a roller bearing. Wheel diameter 200mm, tread width 46mm, overall height 235mm, top plate 135mm x 110mm, hole centres 105mm x 80mm. Load capacity 205kg.



Diameter (mm)	200
Castor Type	Swivel
Fixing Option	Plate
Height (mm)	235
Wheel Material	Rubber on Polypropylene
Colour / Shore Hardness	Grey Rubber on Polypropylene Rim / 85 Shore A
Temperature Resistance	-20 °C TO +60 °C
Bearing Type	Roller
Load Capacity (kg)	205
Tread (mm)	46
Swivel Radius (mm)	153
Plate Size (mm)	135 x 110
Hole Centres (mm)	105 x 80
Top Plate Thickness (mm)	2.5
Fork Thickness (mm)	2.5
To Suit Fixing Bolt (mm)	10