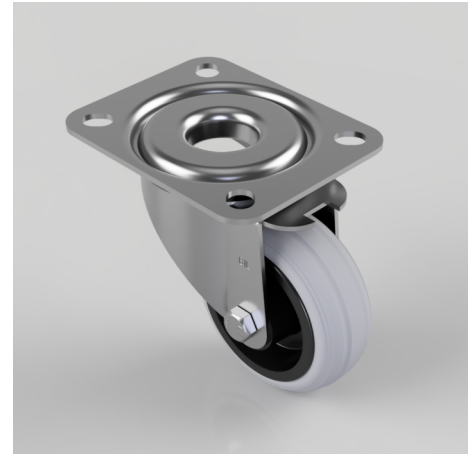


Grey Rubber Polypropylene Plate Swivel Castor 80mm 50kg Load

Product code: BZMM80GRB

Pressed steel swivel castor with top plate fixing fitted with a grey rubber tyre on black polypropylene centre wheel with roller bearing. Wheel diameter 80mm, tread width 25mm, overall height 105mm, top plate 105mm x 85mm, hole centres 80mm x 60mm. Load capacity 50kg.



Diameter (mm)	80
Castor Type	Swivel
Fixing Option	Plate
Height (mm)	105
Wheel Material	Rubber on Polypropylene
Colour / Shore Hardness	Grey Rubber on Polypropylene Rim / 85 Shore A
Temperature Resistance	-20 °C TO +60 °C
Bearing Type	Roller
Load Capacity (kg)	50
Tread (mm)	50
Swivel Radius (mm)	74
Plate Size (mm)	105 X 85
Hole Centres (mm)	80 X 60
Top Plate Thickness (mm)	2
Fork Thickness (mm)	2
To Suit Fixing Bolt (mm)	8

BIL GROUP LTD

Porte Marsh Road, Calne, Wiltshire, SN11 9BW

Registered in England No: 2603821

VAT Reg: GB572705729

