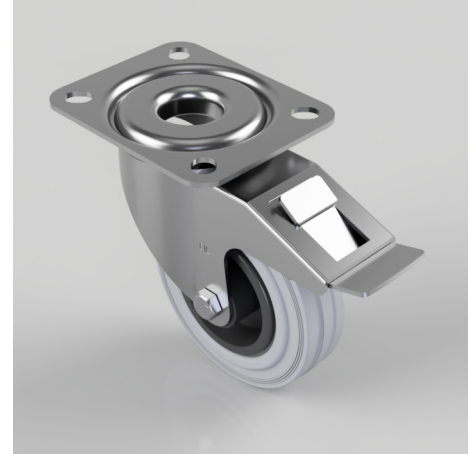


Grey Rubber Polypropylene Plate Swivel Castor Brake 100mm 70kg Load

Product code: BZMM100GRBSWB

Pressed steel swivel castor with top plate fixing fitted with grey rubber tyre on black polypropylene centre wheel with roller bearing and swivel wheel brake. Wheel diameter 100mm, tread width 30mm, overall height 128mm, plate size 105mm x 85mm, hole centres 80mm x 60mm. Load capacity 70kg.



Diameter (mm)	100
Castor Type	Swivel with Total Lock Brake
Fixing Option	Plate
Height (mm)	128
Wheel Material	Rubber on Polypropylene
Colour / Shore Hardness	Grey Rubber on Polypropylene Rim / 85 Shore A
Temperature Resistance	-20 °C TO +60 °C
Bearing Type	Roller
Load Capacity (kg)	70
Tread (mm)	30
Swivel Radius (mm)	118
Plate Size (mm)	105 X 85
Hole Centres (mm)	80 X 60
Top Plate Thickness (mm)	2.5
Fork Thickness (mm)	2
To Suit Fixing Bolt (mm)	8

BIL GROUP LTD

Porte Marsh Road, Calne, Wiltshire, SN11 9BW

Registered in England No: 2603821

VAT Reg: GB572705729

