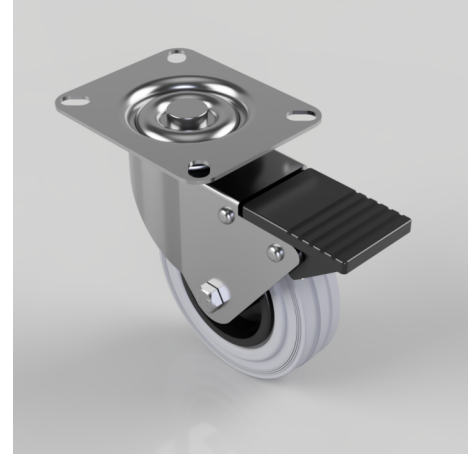


Grey Rubber Polypropylene Plate Swivel Castor Brake 100mm 70kg Load

Product code: BZBC100GRBSWB

Pressed steel swivel castor with a top plate fixing fitted with a grey rubber tyre on black polypropylene centred wheel with a roller bearing and swivel wheel brake. Wheel diameter 100mm, tread width 30mm, overall height 126mm, plate size 102mm x 84mm, hole centres 80mm x 60mm. Load capacity 70kg.



Diameter (mm)	100
Fixing Option	Plate
Castor Type	Swivel with Total Lock Brake
Plate Size (mm)	102 x 84
Hole Centres (mm)	80 X 60
Height (mm)	126
Bearing Type	Roller
Swivel Radius (mm)	115
Wheel Material	Rubber on Polypropylene
Colour / Shore Hardness	Grey Rubber on Polypropylene Rim / 85 Shore A
Top Plate Thickness (mm)	2
Fork Thickness (mm)	2
Temperature Resistance	-20 °C TO +60 °C
To Suit Fixing Bolt (mm)	8
Tread (mm)	30
Load Capacity (kg)	70

BIL GROUP LTD

Porte Marsh Road, Calne, Wiltshire, SN11 9BW

Registered in England No: 2603821

VAT Reg: GB572705729

