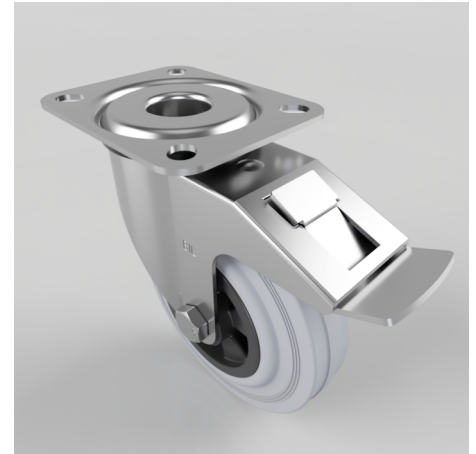


Grey Rubber Polypropylene Plate Swivel Castor Brake 125mm 90kg Load

Product code: SSMM125GRBSWB

Grade 304 Pressed stainless steel swivel castor with a top plate fixing fitted with a grey rubber tyred black polypropylene centred wheel with a roller bearing and swivel wheel brake. Wheel diameter 125mm, tread width 37.5mm, overall height 155mm, top plate 105mm x 85mm, hole centres 80mm x 60mm. Load capacity 90kg.



Diameter (mm)	125
Fixing Option	Plate
Castor Type	Swivel with Total Lock Brake
Height (mm)	155
Wheel Material	Rubber on Polypropylene
Colour / Shore Hardness	Grey Rubber on Polypropylene Rim / 85 Shore A
Bearing Type	Roller
Tread (mm)	37.5
Fork Thickness (mm)	2
To Suit Fixing Bolt (mm)	8
Load Capacity (kg)	90
Temperature Resistance	-20 °C TO +60 °C
Plate Size (mm)	105 X 85
Hole Centres (mm)	80 X 60
Top Plate Thickness (mm)	2
Swivel Radius (mm)	123

BIL GROUP LTD

Porte Marsh Road, Calne, Wiltshire, SN11 9BW

Registered in England No: 2603821

VAT Reg: GB572705729

