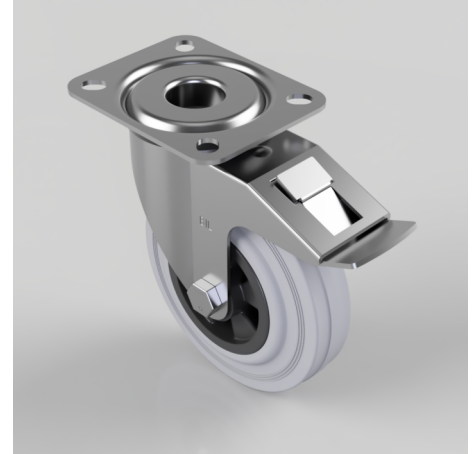


Grey Rubber Polypropylene Plate Swivel Castor Brake 125mm 100kg Load

Product code: BZMM125GRBSWB

Pressed steel swivel castor with top plate fixing fitted with a grey rubber tyre on black polypropylene centre with roller bearing and total lock brake. Wheel diameter 125mm, tread width 37.5mm overall height 155mm, plate size 105mm x 85mm, hole centres 80mm x 60mm. Load capacity 100kg.



| | |
|--------------------------|---|
| Diameter (mm) | 125 |
| Castor Type | Swivel with Total Lock Brake |
| Fixing Option | Plate |
| Height (mm) | 155 |
| Wheel Material | Rubber on Polypropylene |
| Colour / Shore Hardness | Grey Rubber on Polypropylene Rim / 85 Shore A |
| Temperature Resistance | -20 °C TO +60 °C |
| Bearing Type | Roller |
| Load Capacity (kg) | 100 |
| Tread (mm) | 37.5 |
| Swivel Radius (mm) | 123 |
| Plate Size (mm) | 105 X 85 |
| Hole Centres (mm) | 80 X 60 |
| Top Plate Thickness (mm) | 2.5 |
| Fork Thickness (mm) | 2 |
| To Suit Fixing Bolt (mm) | 8 |

BIL GROUP LTD

Porte Marsh Road, Calne, Wiltshire, SN11 9BW

Registered in England No: 2603821

VAT Reg: GB572705729

