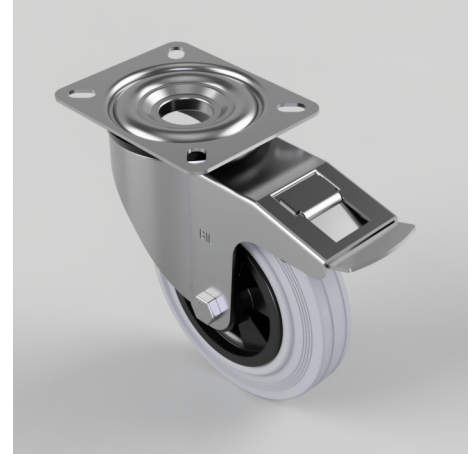


Grey Rubber Polypropylene Plate Swivel Castor Brake 160mm 140kg Load

Product code: BZMM160GRSWB

Pressed steel swivel castor with a top plate fixing fitted with a grey rubber tyre black polypropylene centred wheel with a plain bore and total lock brake. Wheel diameter 160mm, tread width 40mm, overall height 195mm, top plate 140mm x 110mm, hole centres 105mm x 80mm/75mm. Load capacity 140kg.



Diameter (mm)	160
Castor Type	Swivel with Total Lock Brake
Fixing Option	Plate
Height (mm)	195
Wheel Material	Rubber on Polypropylene
Colour / Shore Hardness	Grey Rubber on Polypropylene Rim / 85 Shore A
Temperature Resistance	-20 °C TO +60 °C
Bearing Type	Plain
Load Capacity (kg)	140
Tread (mm)	50
Swivel Radius (mm)	168
Plate Size (mm)	135 x 110
Hole Centres (mm)	105 x 80/75
Top Plate Thickness (mm)	3
Fork Thickness (mm)	3
To Suit Fixing Bolt (mm)	10

BIL GROUP LTD

Porte Marsh Road, Calne, Wiltshire, SN11 9BW

Registered in England No: 2603821

VAT Reg: GB572705729

