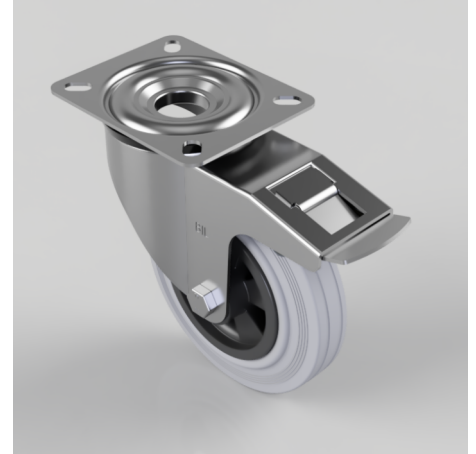


Grey Rubber Polypropylene Plate Swivel Castor Brake 160mm 140kg Load

Product code: BZMM160GRBSWB

Pressed steel swivel castor with a top plate fixing fitted with a grey rubber tyre black polypropylene centred wheel with a roller bearing, thread guards and total lock brake. Wheel diameter 160mm, tread width 40mm, overall height 195mm, top plate 135mm x 110mm, hole centres 105mm x 80mm. Load capacity 140kg.



| | |
|--------------------------|---|
| Diameter (mm) | 160 |
| Castor Type | Swivel with Total Lock Brake |
| Fixing Option | Plate |
| Height (mm) | 195 |
| Wheel Material | Rubber on Polypropylene |
| Colour / Shore Hardness | Grey Rubber on Polypropylene Rim / 85 Shore A |
| Temperature Resistance | -20 °C TO +60 °C |
| Bearing Type | Roller |
| Load Capacity (kg) | 140 |
| Tread (mm) | 40 |
| Swivel Radius (mm) | 167 |
| Plate Size (mm) | 135 x 110 |
| Hole Centres (mm) | 105 x 80 |
| Top Plate Thickness (mm) | 2.5 |
| Fork Thickness (mm) | 2.5 |
| To Suit Fixing Bolt (mm) | 10 |