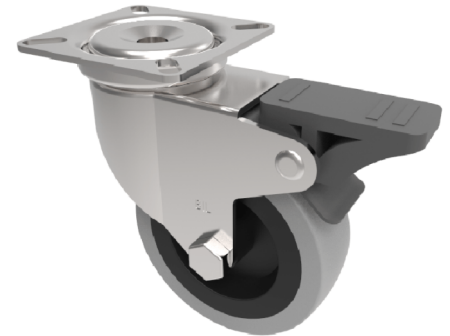


## Grey Rubber Polypropylene Plate Swivel Castor Brake 75mm 50kg Load

**Product code: BZA75GRSWB**



Pressed steel swivel castor with top plate fixing fitted with a grey thermoplastic rubber tyre on grey polypropylene centre wheel with plain bore and total lock brake. Wheel diameter 75mm, tread width 24mm, overall height 101mm, plate size 60mm x 60mm, hole centres 46mm x 46. Load capacity 50kg.

Diameter (mm)	75
Fixing Option	Plate
Castor Type	Swivel with Total Lock Brake
Plate Size (mm)	60 x 60
Hole Centres (mm)	46 x 46
Height (mm)	101
Bearing Type	Plain
Swivel Radius (mm)	92
Wheel Material	Rubber on Polypropylene
Colour / Shore Hardness	Grey Rubber on Polypropylene Rim / 87 Shore A
Top Plate Thickness (mm)	2
Fork Thickness (mm)	2
Temperature Resistance	-15 °C TO +45 °C
To Suit Fixing Bolt (mm)	6
Tread (mm)	24
Load Capacity (kg)	50