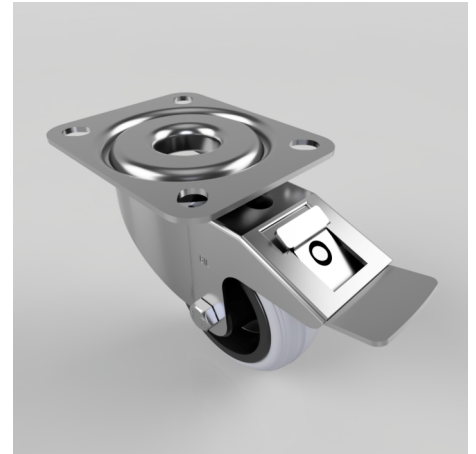


## Grey Rubber Polypropylene Plate Swivel Castor Brake 80mm 50kg Load

**Product code: BZMM80GRBSWB**

Pressed steel swivel castor with top plate fixing fitted with grey rubber tyre on black polypropylene centred wheel with roller bearing and total lock brake. Wheel diameter 80mm, tread width 25mm, overall height, 105mm top plate 105mm x 85mm, hole centres 80mm x 60mm. Load capacity 50kg.



Diameter (mm)	80
Castor Type	Swivel with Total Lock Brake
Fixing Option	Plate
Height (mm)	105
Wheel Material	Rubber on Polypropylene
Colour / Shore Hardness	Grey Rubber on Polypropylene Rim / 85 Shore A
Temperature Resistance	-20 °C TO +60 °C
Bearing Type	Roller
Load Capacity (kg)	50
Tread (mm)	50
Swivel Radius (mm)	111
Plate Size (mm)	105 X 85
Hole Centres (mm)	80 X 60
Top Plate Thickness (mm)	2
Fork Thickness (mm)	2
To Suit Fixing Bolt (mm)	8