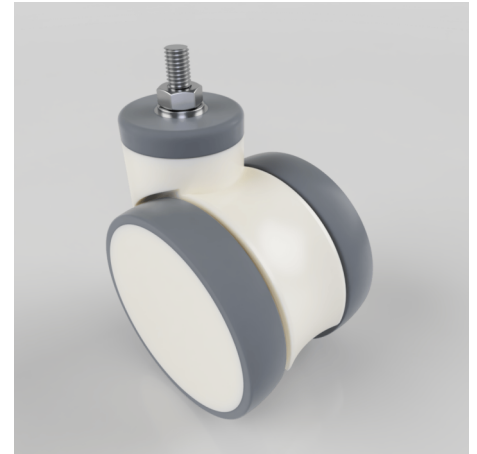


Grey Rubber Stem Swivel Castor 100mm 90kg load

Product code: NTW100TPRBJST

Twin wheel nylon body swivel castor with bolt hole fixing. Twin grey rubber tyred wheels with ball bearings and fitted with a M10mm x 15m fixed stem, Wheel diameter 2 x 100mm, tread width 2 x 20mm, Total castor width 82mm, overall height 124mm. bolt hole 12.5mm, Load capacity 90kg.



Height (mm)	124
Tread (mm)	20 x 2
To Suit Fixing Bolt (mm)	M10 x 15
Bearing Type	Ball
Diameter (mm)	100
Wheel Material	Grey Rubber on Polypropylene
Fixing Option	Bolt Hole
Castor Type	Swivel
Load Capacity (kg)	90
Shore Hardness	85 Shore A
Swivel Radius (mm)	92

BIL GROUP LTD

Porte Marsh Road, Calne, Wiltshire, SN11 9BW

Registered in England No: 2603821

VAT Reg: GB572705729

