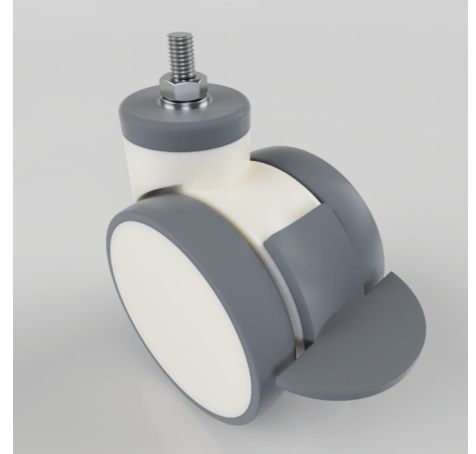


Grey Rubber Stem Swivel Castor Brake 100mm 90kg load

Product code: NTW100TPRBJSWBST

Twin wheel nylon body swivel castor with bolt hole fixing. Twin grey rubber tyred wheels with ball bearings and fitted with a M10mm x 15m fixed stem and total lock brake, Wheel diameter 2 x 100mm, tread width 2 x 20mm, Total castor width 82mm, overall height 124mm. bolt hole 12.5mm, Load capacity 90kg.



| | |
|--------------------------|------------------------------|
| Height (mm) | 124 |
| Tread (mm) | 20 x 2 |
| To Suit Fixing Bolt (mm) | M12 X 26 |
| Bearing Type | Ball |
| Diameter (mm) | 100 |
| Wheel Material | Grey Rubber on Polypropylene |
| Fixing Option | Bolt Hole |
| Castor Type | Swivel with Total Lock Brake |
| Load Capacity (kg) | 90 |
| Shore Hardness | 85 Shore A |
| Swivel Radius (mm) | 115 |