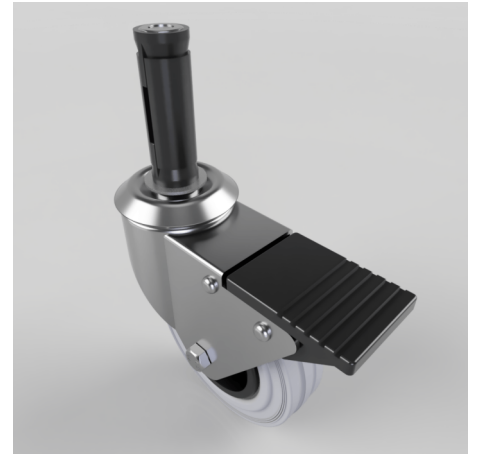


## Grey Rubber Swivel Braked Expander 100mm 70kg

**Product code: BZBC100GRBSWBEXR21**

Pressed steel swivel castor fitted with a 21.5mm to 24mm round expander and a grey polypropylene wheel with a roller bearing bearing and total lock brake. Wheel diameter 100mm, tread width 30mm, overall height 126mm, Load capacity 70kg.



Height (mm)	128
Tread (mm)	30
Bearing Type	Roller
Diameter (mm)	100
Wheel Material	Rubber on Polypropylene
Fixing Option	Bolt Hole, Expander
Castor Type	Swivel with Total Lock Brake
Load Capacity (kg)	70
Swivel Radius (mm)	115
Expander Type (mm)	Round Expander to Suit 21.5 - 24
Fork Thickness (mm)	2
Head Dia (mm)	60
Colour / Shore Hardness	Grey Rubber on Polypropylene Rim / 85 Shore A
Temperature Resistance	-20 °C TO +60 °C