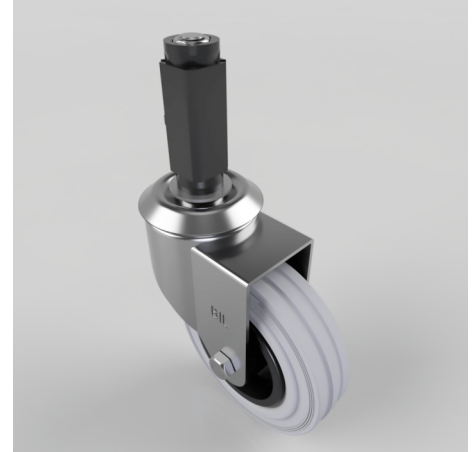


## Grey Rubber Swivel Expander 100mm 70kg

**Product code: BZBC100GRBEXS21**

Pressed steel swivel castor fitted with a 21.5mm to 24mm square expander and a grey polypropylene wheel with a roller bearing bearing. Wheel diameter 100mm, tread width 30mm, overall height 126mm, Load capacity 70kg.



Height (mm)	128
Tread (mm)	30
Bearing Type	Roller
Diameter (mm)	100
Wheel Material	Rubber on Polypropylene
Fixing Option	Bolt Hole, Expander
Castor Type	Swivel
Load Capacity (kg)	70
Swivel Radius (mm)	88
Expander Type (mm)	Square Expander to Suit 21.5 - 24
Fork Thickness (mm)	2
Head Dia (mm)	60
Colour / Shore Hardness	Grey Rubber on Polypropylene Rim / 85 Shore A
Temperature Resistance	-20 °C TO +60 °C

## BIL GROUP LTD

Porte Marsh Road, Calne, Wiltshire, SN11 9BW

Registered in England No: 2603821

VAT Reg: GB572705729

