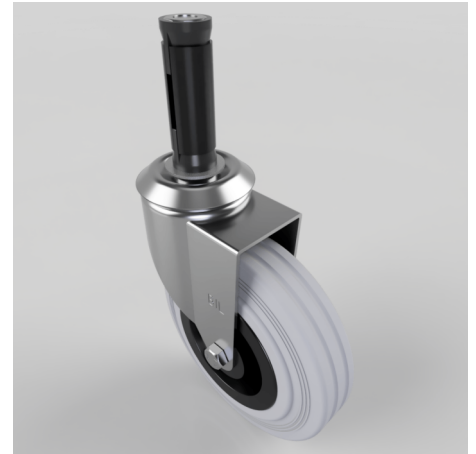


Grey Rubber Swivel Expander 125mm 90kg

Product code: BZBC125GRBEXS21

Pressed steel swivel castor fitted with a 21.5mm to 24mm square expander and a grey polypropylene wheel with a roller bearing bearing. Wheel diameter 125mm, tread width 37.5mm, overall height 126mm, Load capacity 90kg.



Height (mm)	154
Tread (mm)	37.5
Bearing Type	Roller
Diameter (mm)	125
Wheel Material	Rubber on Polypropylene
Fixing Option	Bolt Hole, Expander
Castor Type	Swivel
Load Capacity (kg)	90
Swivel Radius (mm)	100
Expander Type (mm)	Square Expander to Suit 21.5 - 24
Fork Thickness (mm)	2
Head Dia (mm)	60
Colour / Shore Hardness	Grey Rubber on Polypropylene Rim / 85 Shore A
Temperature Resistance	-20 °C TO +60 °C