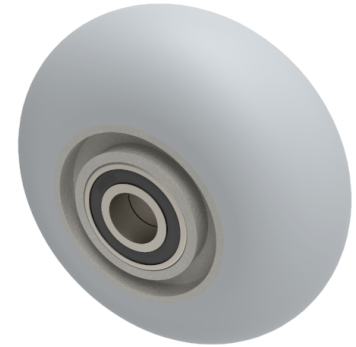


## Grey Soft Elastic Rubber 100mm Ball Bearing Wheel 150kg Load

**Product code: BZH100WSRERGBJM15**



100mm diameter, 40mm tread width, 55 shore A grey ergonomic elastic rubber tyre on aluminium centre wheel with ball bearings. Bore size 15mm, hub length 40mm. Load capacity 140kg. REACH compliant also PAH-Free rubber to confirm to EU-directive 2005/69/EC

Bearing Type	Ball
Bore Size (mm)	15
Wheel Material	Rubber on Aluminium
Colour / Shore Hardness	Grey Ergonomic Rubber on Aluminium Rim / 55 Shore A
Diameter (mm)	100
Hub Width (mm)	40
Load Capacity (kg)	150
Tread (mm)	40
Temperature Resistance	-30 °C TO +80 °C

### BIL GROUP LTD

Porte Marsh Road, Calne, Wiltshire, SN11 9BW

Registered in England No: 2603821

VAT Reg: GB572705729

