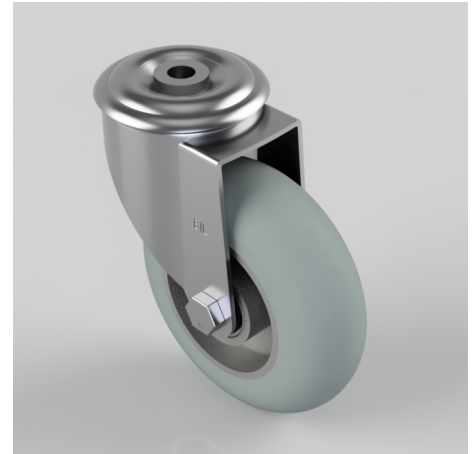


## Grey Soft Elastic Rubber Bolt Hole Swivel Castor 125mm 200kg Load

**Product code: BZMM125SRERGBJBH12**

Pressed steel swivel castor with a 12mm bolt hole fixing with a grey ergonomic grey high elastic natural 55 shore A round profile rubber tyred wheel with a aluminium centre with ball bearings. Wheel diameter 125mm, tread width 40mm, overall height 155mm, Load capacity 200kg. REACH compliant also PAH-Free rubber to confirm to EU-directive 2005/69/EC, also available with flat tread details on request



Diameter (mm)	125
Castor Type	Swivel
Fixing Option	Bolt Hole
Height (mm)	155
Wheel Material	Rubber on Aluminium
Colour / Shore Hardness	Grey Ergonomic Rubber on Aluminium Rim / 55 Shore A
Temperature Resistance	-30 °C TO +80 °C
Bearing Type	Ball
Load Capacity (kg)	200
Tread (mm)	40
Swivel Radius (mm)	104
Head Dia (mm)	76
Fork Thickness (mm)	2.5
To Suit Fixing Bolt (mm)	12

## BIL GROUP LTD

Porte Marsh Road, Calne, Wiltshire, SN11 9BW

Registered in England No: 2603821

VAT Reg: GB572705729

