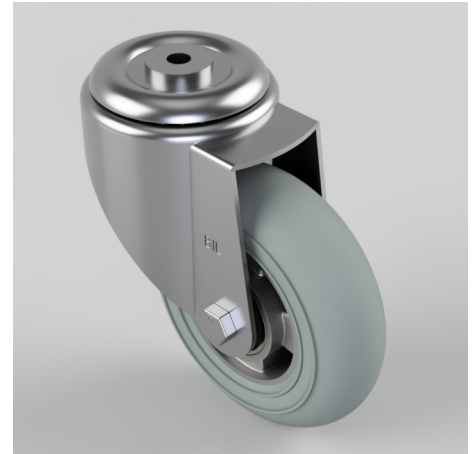


## Grey Soft Elastic Rubber Bolt Hole Swivel Castor 150mm 250kg Load

**Product code: BZMM150SRERGBJBH12**

Pressed steel swivel castor with a 12mm bolt hole fitted with a grey ergonomic high elastic natural 55 shore A round profile rubber tyre on aluminium centred wheel with ball bearings. Wheel diameter 150mm, tread width 47mm, overall height 190mm, Load capacity 250kg. REACH compliant also PAH-Free rubber to confirm to EU-directive 2005/69/EC, also available with flat tread details on request



Diameter (mm)	150
Castor Type	Swivel
Fixing Option	Bolt Hole
Height (mm)	190
Wheel Material	Rubber on Aluminium
Colour / Shore Hardness	Grey Ergonomic Rubber on Aluminium Rim / 55 Shore A
Temperature Resistance	-30 °C TO +80 °C
Bearing Type	Ball
Load Capacity (kg)	250
Tread (mm)	47
Swivel Radius (mm)	135
Head Dia (mm)	90
Fork Thickness (mm)	3
To Suit Fixing Bolt (mm)	12

## BIL GROUP LTD

Porte Marsh Road, Calne, Wiltshire, SN11 9BW

Registered in England No: 2603821

VAT Reg: GB572705729

