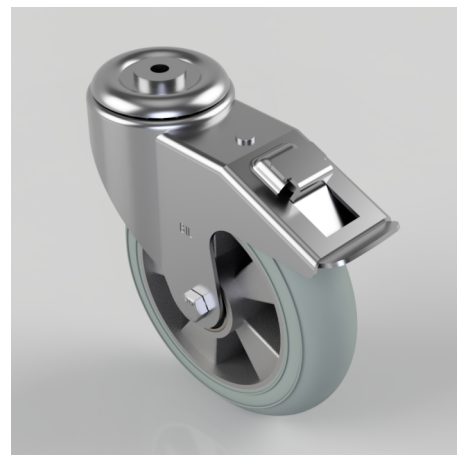


Grey Soft Elastic Rubber Bolt Hole Swivel Castor 200mm 350kg Load

Product code: BZMM200SRERGBJBH12SW

Pressed steel swivel castor with a 12mm bolt hole fitted with an ergonomic grey high elastic natural 55 shore A round profile rubber tyred aluminium centred wheel with ball bearings and a total lock brake. Wheel diameter 200mm, tread width 50mm, overall height 235mm, Load capacity 350kg. REACH compliant also PAH-Free rubber to confirm to EU-directive 2005/69/EC, also available with flat tread details on request



Diameter (mm)	200
Castor Type	Swivel with Total Lock Brake
Fixing Option	Bolt Hole
Height (mm)	235
Wheel Material	Rubber on Aluminium
Colour / Shore Hardness	Grey Ergonomic Rubber on Aluminium Rim / 55 Shore A
Temperature Resistance	-30 °C TO +80 °C
Bearing Type	Ball
Load Capacity (kg)	350
Tread (mm)	50
Swivel Radius (mm)	183
Head Dia (mm)	90
Fork Thickness (mm)	3
To Suit Fixing Bolt (mm)	12

BIL GROUP LTD

Porte Marsh Road, Calne, Wiltshire, SN11 9BW

Registered in England No: 2603821

VAT Reg: GB572705729

