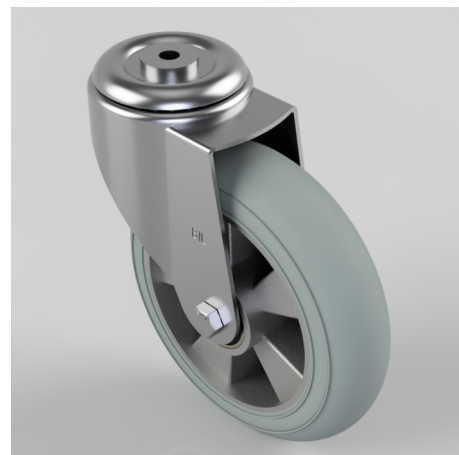


Grey Soft Elastic Rubber Bolt Hole Swivel Castor 200mm 350kg Load

Product code: BZMM200SRERGBJBH12

Pressed steel swivel castor with a 12mm bolt hole fitted with an ergonomic grey high elastic natural 55 shore A round profile rubber tyred aluminium centred wheel with a ball bearings. Wheel diameter 200mm, tread width 50mm, overall height 235mm, Load capacity 350kg. REACH compliant also PAH-Free rubber to confirm to EU-directive 2005/69/EC, also available with flat tread details on request



Diameter (mm)	200
Castor Type	Swivel
Fixing Option	Bolt Hole
Height (mm)	235
Wheel Material	Rubber on Aluminium
Colour / Shore Hardness	Grey Ergonomic Rubber on Aluminium Rim / 55 Shore A
Temperature Resistance	-30 °C TO +80 °C
Bearing Type	Ball
Load Capacity (kg)	350
Tread (mm)	50
Swivel Radius (mm)	168
Head Dia (mm)	90
Fork Thickness (mm)	3
To Suit Fixing Bolt (mm)	12

BIL GROUP LTD

Porte Marsh Road, Calne, Wiltshire, SN11 9BW

Registered in England No: 2603821

VAT Reg: GB572705729

