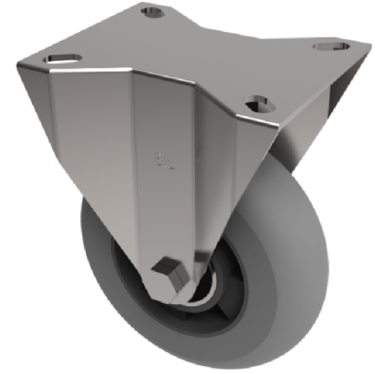


Grey Soft Elastic Rubber Plate Fixed Castor 150mm 270kg Load

Product code: BZMMF150SRERGBJ



Pressed steel fixed castor with a top plate fixing fitted with an ergonomic grey high elastic natural 55 shore A round profile rubber tyred aluminium centred wheel with a ball journal bearings. Wheel diameter 150mm, tread width 47mm, overall height 190mm, top plate 140mm x 110mm, hole centres 105mm x 80mm. Load capacity 270kg. REACH compliant also PAH-Free rubber to confirm to EU-directive 2005/69/EC, also available with flat tread details on request

Diameter (mm)	150
Castor Type	Fixed
Fixing Option	Plate
Height (mm)	190
Wheel Material	Rubber on Aluminium
Colour / Shore Hardness	Grey Ergonomic Rubber on Aluminium Rim / 55 Shore A
Temperature Resistance	-30 °C TO +80 °C
Bearing Type	Ball
Load Capacity (kg)	270
Tread (mm)	47
Plate Size (mm)	140 x 110
Hole Centres (mm)	105 x 80/75
Top Plate Thickness (mm)	3
Fork Thickness (mm)	3
To Suit Fixing Bolt (mm)	10

BIL GROUP LTD

Porte Marsh Road, Calne, Wiltshire, SN11 9BW

Registered in England No: 2603821

VAT Reg: GB572705729

