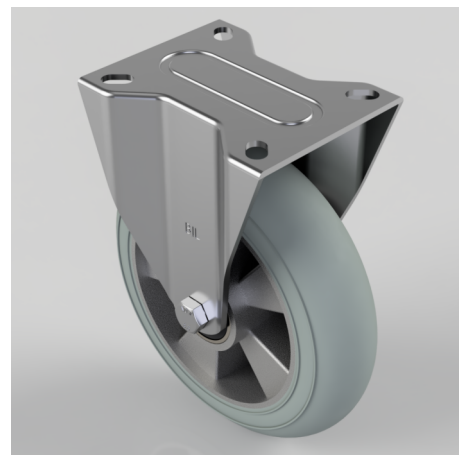


Grey Soft Elastic Rubber Plate Fixed Castor 200mm 380kg Load

Product code: BZMMF200SRERGBJ

Pressed steel fixed castor with a top plate fixing fitted with an ergonomic grey high elastic natural 55 shore A round profile rubber tyred aluminium centred wheel with a ball journal bearings. Wheel diameter 200mm, tread width 50mm, overall height 235mm, top plate 140mm x 110mm, hole centres 105mm x 80mm. Load capacity 380kg. REACH compliant also PAH-Free rubber to confirm to EU-directive 2005/69/EC, also available with flat tread details on request



Diameter (mm)	200
Castor Type	Fixed
Fixing Option	Plate
Height (mm)	235
Wheel Material	Rubber on Aluminium
Colour / Shore Hardness	Grey Ergonomic Rubber on Aluminium Rim / 55 Shore A
Temperature Resistance	-30 °C TO +80 °C
Bearing Type	Ball
Load Capacity (kg)	350
Tread (mm)	50
Plate Size (mm)	135 x 110
Hole Centres (mm)	105 x 80
Top Plate Thickness (mm)	3.5
Fork Thickness (mm)	3.5
To Suit Fixing Bolt (mm)	10

BIL GROUP LTD

Porte Marsh Road, Calne, Wiltshire, SN11 9BW

Registered in England No: 2603821

VAT Reg: GB572705729

