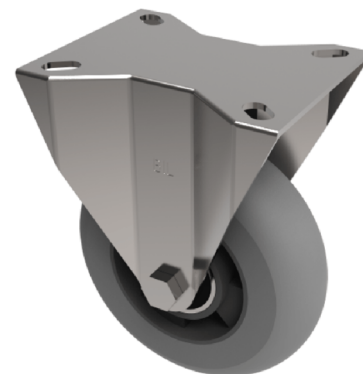


Grey Soft Elastic Rubber Plate Fixed Castor 250mm 450kg Load

Product code: BZPF250SRERGBJ

Pressed steel fixed castor with a flat plate fixing fitted with a grey ergonomic high elastic natural 55 shore A round profile rubber tyre on aluminium centred wheel with a ball bearing. Wheel diameter 250mm, tread width 50mm, overall height 300mm, plate size 135mm x 110mm, hole centres 105mm x 80mm. Load capacity 450kg. REACH compliant also PAH-Free rubber to confirm to EU-directive 2005/69/EC, also available with flat tread details on request



Diameter (mm)	250
Castor Type	Fixed
Fixing Option	Plate
Height (mm)	292
Wheel Material	Rubber on Aluminium
Colour / Shore Hardness	Grey Ergonomic Rubber on Aluminium Rim / 55 Shore A
Temperature Resistance	-30 °C TO +80 °C
Bearing Type	Ball
Load Capacity (kg)	450
Tread (mm)	50
Plate Size (mm)	135 x 110
Hole Centres (mm)	105 x 80
Top Plate Thickness (mm)	6
Fork Thickness (mm)	4
To Suit Fixing Bolt (mm)	12

BIL GROUP LTD

Porte Marsh Road, Calne, Wiltshire, SN11 9BW

Registered in England No: 2603821

VAT Reg: GB572705729

