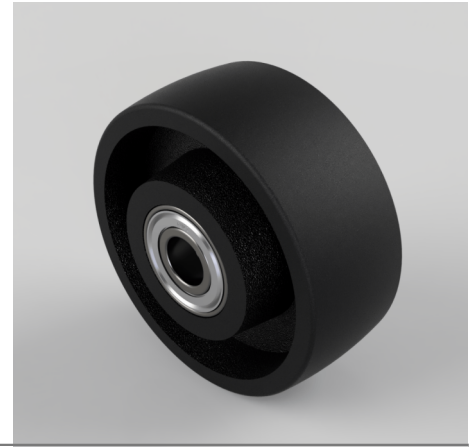


High Temp Cast Iron 125mm Ball Bearing Wheel 550kg Load

Product code: BZH125WCIBJM20/HT

Cast iron wheel with ball bearings. Wheel diameter 125mm, tread width 50mm, bore size 20mm, hub length 60mm. Load capacity 550kg at 270c Maximum Temperature.



Wheel Material	Cast Iron
Diameter (mm)	125
Load Capacity (kg)	550
Bearing Type	Ball
Bore Size (mm)	20
Tread (mm)	50
Hub Width (mm)	60
Temperature Resistance	-30 °C to +270 °C
Colour / Shore Hardness	Black Painted Cast Iron

BIL GROUP LTD

Porte Marsh Road, Calne, Wiltshire, SN11 9BW

Registered in England No: 2603821

VAT Reg: GB572705729

