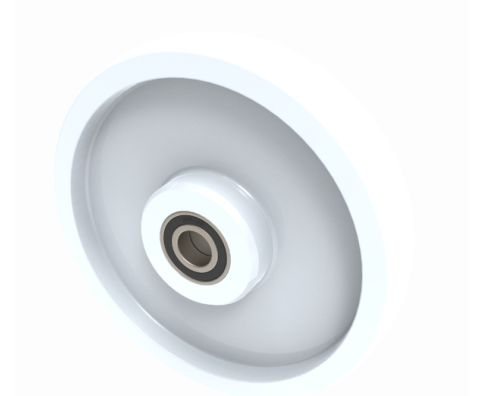


Nylon 250mm Ball Bearing Wheel 800kg Load

Product code: BZH250WNYBJM25/60

250mm diameter white nylon wheel with ball bearings. Tread width 48mm, bore 25mm, hub 60mm. Load capacity 800kg.



Wheel Material	Nylon
Diameter (mm)	250
Load Capacity (kg)	800
Bearing Type	Ball
Bore Size (mm)	25
Tread (mm)	48
Hub Width (mm)	58
Colour / Shore Hardness	White Nylon
Temperature Resistance	-30 °C TO +80 °C