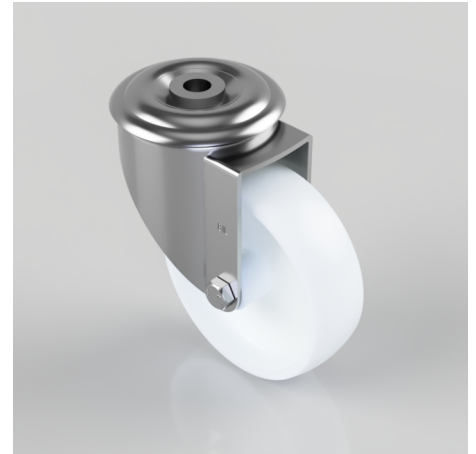


Nylon Bolt Hole Swivel Castor 100mm 180kg Load

Product code: BZMM100NYBH12

Pressed steel swivel castor with 12mm bolt hole fixing fitted with a white nylon wheel with a plain bore. Wheel diameter 100mm, tread width 30mm, overall height 128mm. Load capacity 180kg.



Diameter (mm)	100
Castor Type	Swivel
Fixing Option	Bolt Hole
Height (mm)	128
Wheel Material	Nylon
Colour / Shore Hardness	White Nylon
Temperature Resistance	-30 °C TO +80 °C
Bearing Type	Plain
Load Capacity (kg)	180
Tread (mm)	30
Swivel Radius (mm)	88
Head Dia (mm)	76
Fork Thickness (mm)	2.5
To Suit Fixing Bolt (mm)	12