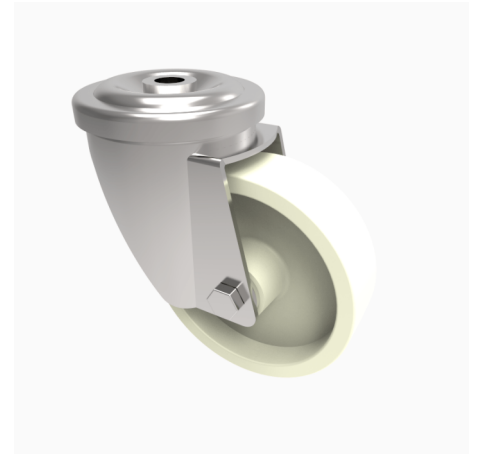


## Nylon Bolt Hole Swivel Castor 100mm 220kg Load

**Product code: SSMH100NYBH12HT**

Grade 304 Stainless steel swivel castor with a 12mm bolt hole fitted with a high temp off white nylon wheel with Plain Bore. Wheel diameter 100mm, tread width 35mm, overall height 130mm, Load capacity 200kg at a maximum 130c.



Diameter (mm)	100
Fixing Option	Bolt Hole
Castor Type	Swivel
Head Dia (mm)	78
To Suit Fixing Bolt (mm)	12
Height (mm)	128
Bearing Type	Plain
Swivel Radius (mm)	92
Wheel Material	Nylon
Colour / Shore Hardness	White High Temperature Nylon
Temperature Resistance	-30 °C to +130 °C
Load Capacity (kg)	220
Tread (mm)	35
Fork Thickness (mm)	2.5