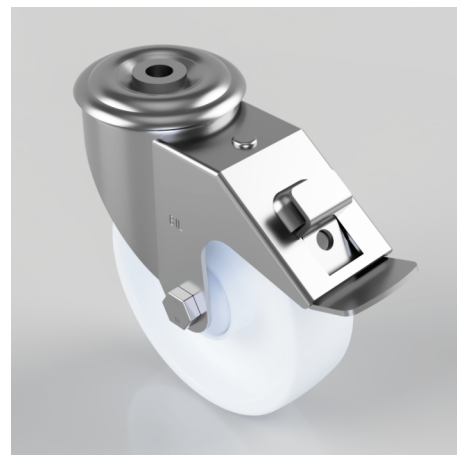


Nylon Bolt Hole Swivel Castor 125mm 200kg Load

Product code: BZMM125NYBJBH12SWB

Pressed steel swivel castor with a 12mm bolt hole fitted with a white nylon wheel with single ball bearing and hub caps and a total lock brake. Wheel diameter 125mm, tread width 37mm, overall height 155mm, Load capacity 200kg.



Diameter (mm)	125
Castor Type	Swivel with Total Lock Brake
Fixing Option	Bolt Hole
Height (mm)	155
Wheel Material	Nylon
Colour / Shore Hardness	White Nylon
Temperature Resistance	-30 °C TO +80 °C
Bearing Type	Ball
Load Capacity (kg)	200
Tread (mm)	37
Swivel Radius (mm)	134
Head Dia (mm)	76
Fork Thickness (mm)	2
To Suit Fixing Bolt (mm)	12

BIL GROUP LTD

Porte Marsh Road, Calne, Wiltshire, SN11 9BW

Registered in England No: 2603821

VAT Reg: GB572705729

