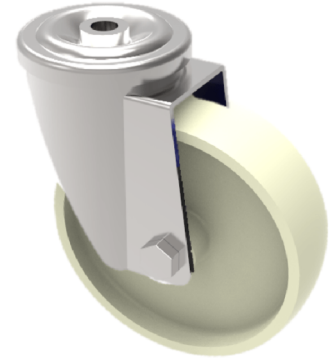


## Nylon Bolt Hole Swivel Castor 125mm 230kg Load

**Product code: BZMH125NYBH12HT**

Pressed steel swivel castor with a 12mm bolt hole fitted with a 130c off white nylon wheel with a plain bore. Wheel diameter 125mm, tread width 40mm, overall height 158mm, Load capacity 230kg.



Diameter (mm)	125
Fixing Option	Bolt Hole
Castor Type	Swivel
Head Dia (mm)	78
To Suit Fixing Bolt (mm)	12
Height (mm)	158
Bearing Type	Plain
Swivel Radius (mm)	107
Wheel Material	Nylon
Colour / Shore Hardness	White High Temperature Nylon
Temperature Resistance	-30 °C to +130 °C
Load Capacity (kg)	230
Tread (mm)	40
Fork Thickness (mm)	2.5