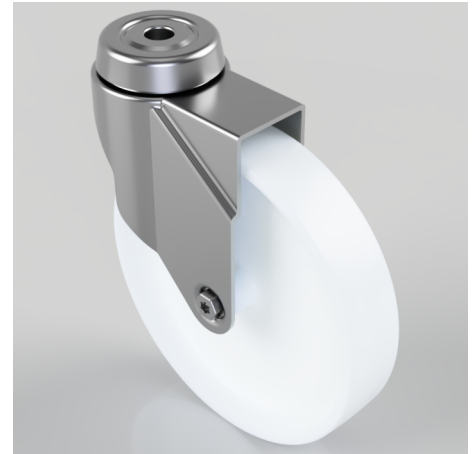


Nylon Bolt Hole Swivel Castor 125mm 80kg Load

Product code: BZRA125NYBH10

Pressed steel swivel castor with a 10mm bolt hole fitted with a white nylon wheel with a plain bore. Wheel diameter 125mm, tread width 25mm, overall height 149mm with a Load capacity 80kg.



Diameter (mm)	125
Fixing Option	Bolt Hole
Castor Type	Swivel
Head Dia (mm)	46
Height (mm)	149
Bearing Type	Plain
Swivel Radius (mm)	106
Wheel Material	Nylon
Colour / Shore Hardness	White Nylon
Fork Thickness (mm)	1.8
Temperature Resistance	-15 °C TO +80 °C
To Suit Fixing Bolt (mm)	10
Tread (mm)	25
Load Capacity (kg)	80