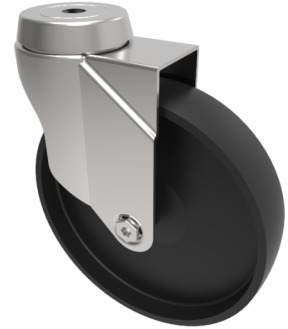


Nylon Bolt Hole Swivel Castor 150mm 100kg Load

Product code: BZM150PLBH12



Pressed steel fixed castor with a 12mm bolt hole fitted with a black polypropylene wheel with plain bore. Wheel diameter 150mm, tread width 32mm, overall height 181mm, Load capacity 100kg. ****MANUFACTURED TO ORDER****

Diameter (mm)	50
Fixing Option	Bolt Hole
Castor Type	Swivel
Head Dia (mm)	57
Height (mm)	181
Bearing Type	Plain
Swivel Radius (mm)	120
Wheel Material	Polypropylene
Colour / Shore Hardness	Black Polypropylene
Fork Thickness (mm)	2
Temperature Resistance	-15 °C TO +80 °C
To Suit Fixing Bolt (mm)	12
Tread (mm)	32
Load Capacity (kg)	100

BIL GROUP LTD

Porte Marsh Road, Calne, Wiltshire, SN11 9BW

Registered in England No: 2603821

VAT Reg: GB572705729

