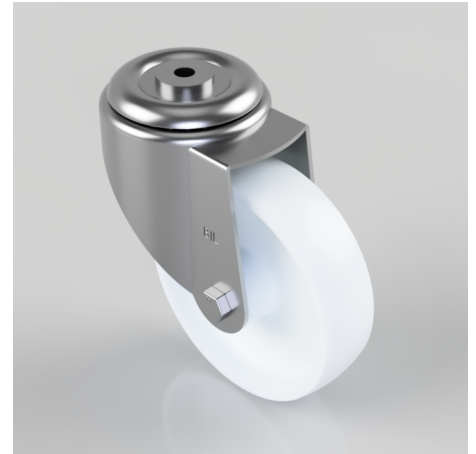


Nylon Bolt Hole Swivel Castor 150mm 350kg Load

Product code: BZMM150NYBH12

Pressed steel swivel castor with a 12mm bolt hole fitted with a white nylon wheel with a plain bore. Wheel diameter 150mm, tread width 40mm, overall height 190mm, Load capacity 350kg.



Diameter (mm)	150
Castor Type	Swivel
Fixing Option	Bolt Hole
Height (mm)	190
Wheel Material	Nylon
Colour / Shore Hardness	White Nylon
Temperature Resistance	-30 °C TO +80 °C
Bearing Type	Plain
Load Capacity (kg)	350
Tread (mm)	40
Swivel Radius (mm)	135
Head Dia (mm)	90
Fork Thickness (mm)	3
To Suit Fixing Bolt (mm)	12

BIL GROUP LTD

Porte Marsh Road, Calne, Wiltshire, SN11 9BW

Registered in England No: 2603821

VAT Reg: GB572705729

