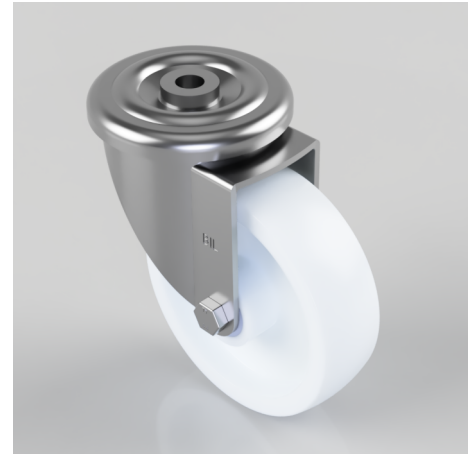


## Nylon Bolt Hole Swivel Castor 150mm 500kg Load

**Product code: BZMM150NYBBH16**

Pressed steel swivel castor with a 16mm bolt hole fitted with a white nylon wheel with a roller bearing. Wheel diameter 150mm, tread width 45mm, overall height 188mm, Load capacity 500kg.



Diameter (mm)	150
Castor Type	Swivel
Fixing Option	Bolt Hole
Height (mm)	188
Wheel Material	Nylon
Colour / Shore Hardness	White Nylon
Temperature Resistance	-30 °C TO +80 °C
Bearing Type	Roller
Load Capacity (kg)	500
Tread (mm)	45
Swivel Radius (mm)	128
Head Dia (mm)	114
Fork Thickness (mm)	4
To Suit Fixing Bolt (mm)	16