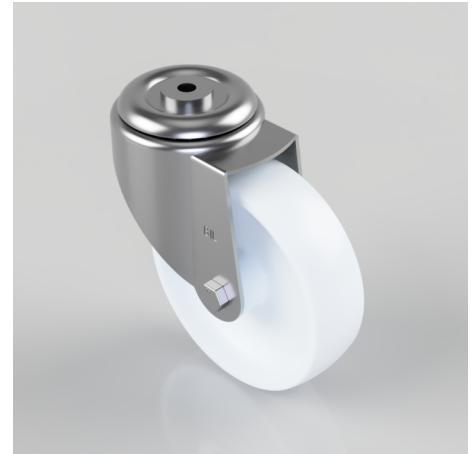


Nylon Bolt Hole Swivel Castor 160mm 350kg Load

Product code: BZMM160NYBBH12

Pressed steel swivel castor with a 12mm bolt hole fixing fitted with a white nylon wheel with a roller bearing. Wheel diameter 160mm, tread width 45mm, overall height 195mm, Load capacity 350kg.



Diameter (mm)	160
Castor Type	Swivel
Fixing Option	Bolt Hole
Height (mm)	195
Wheel Material	Nylon
Colour / Shore Hardness	White Nylon
Temperature Resistance	-30 °C TO +80 °C
Bearing Type	Roller
Load Capacity (kg)	350
Tread (mm)	45
Swivel Radius (mm)	140
Head Dia (mm)	90
Fork Thickness (mm)	3
To Suit Fixing Bolt (mm)	12