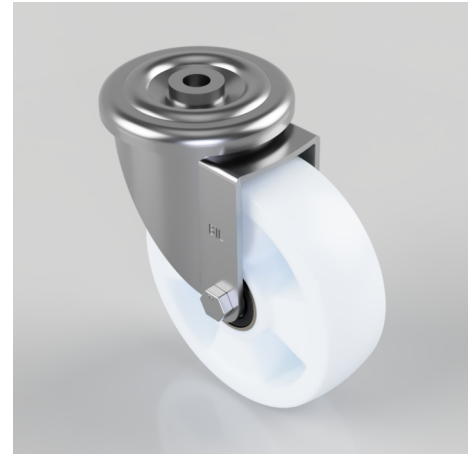


Nylon Bolt Hole Swivel Castor 160mm 500kg Load

Product code: BZMM160NYBJBH16

Pressed steel swivel castor with a 16mm bolt hole fitted with a white nylon wheel with a ball bearing. Wheel diameter 160mm, tread width 50mm, overall height 193mm, Load capacity 500kg.



| | |
|--------------------------|------------------|
| Diameter (mm) | 160 |
| Castor Type | Swivel |
| Fixing Option | Bolt Hole |
| Height (mm) | 193 |
| Wheel Material | Nylon |
| Colour / Shore Hardness | White Nylon |
| Temperature Resistance | -30 °C TO +80 °C |
| Bearing Type | Ball |
| Load Capacity (kg) | 500 |
| Tread (mm) | 50 |
| Swivel Radius (mm) | 133 |
| Head Dia (mm) | 114 |
| Fork Thickness (mm) | 4 |
| To Suit Fixing Bolt (mm) | 16 |

BIL GROUP LTD

Porte Marsh Road, Calne, Wiltshire, SN11 9BW

Registered in England No: 2603821

VAT Reg: GB572705729

