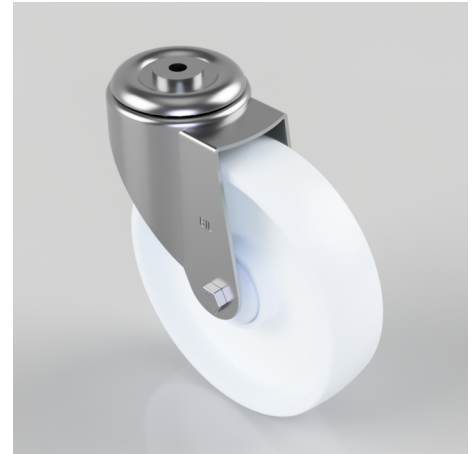


## Nylon Bolt Hole Swivel Castor 200mm 350kg Load

**Product code: BZMM200NYBJBH12**

Pressed steel swivel castor with a 12mm bolt hole fixing fitted with a white nylon wheel with ball bearings. Wheel diameter 200mm, tread width 50mm, overall height 235mm, Load capacity 350kg.



Diameter (mm)	200
Castor Type	Swivel
Fixing Option	Bolt Hole
Height (mm)	235
Wheel Material	Nylon
Colour / Shore Hardness	White Nylon
Temperature Resistance	-30 °C TO +80 °C
Bearing Type	Ball
Load Capacity (kg)	350
Tread (mm)	50
Swivel Radius (mm)	168
Head Dia (mm)	90
Fork Thickness (mm)	3
To Suit Fixing Bolt (mm)	12