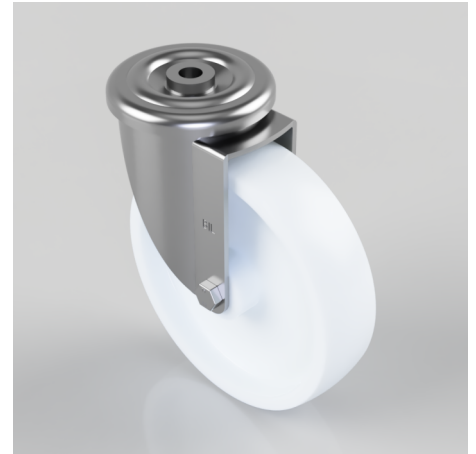


## Nylon Bolt Hole Swivel Castor 200mm 500kg Load

**Product code: BZMM200NYBH16**

Pressed steel swivel castor with a 16mm bolt hole fixing fitted with a white nylon wheel with a Plain Bore. Wheel diameter 200mm, tread width 50mm, overall height 238mm, Load capacity 500kg.



Diameter (mm)	200
Castor Type	Swivel
Fixing Option	Bolt Hole
Height (mm)	238
Wheel Material	Nylon
Colour / Shore Hardness	White Nylon
Temperature Resistance	-30 °C TO +80 °C
Bearing Type	Plain
Load Capacity (kg)	500
Tread (mm)	50
Swivel Radius (mm)	153
Head Dia (mm)	114
Fork Thickness (mm)	4
To Suit Fixing Bolt (mm)	16