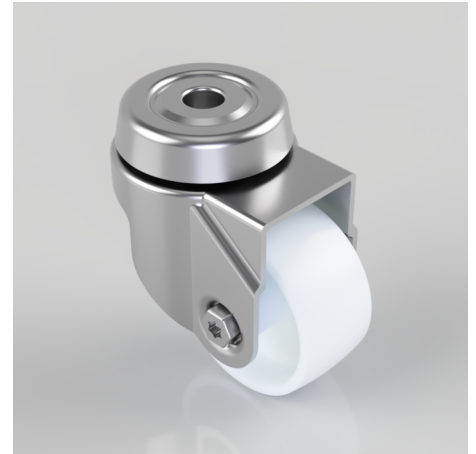


## Nylon Bolt Hole Swivel Castor 50mm 50kg Load

**Product code: SSRA50NYBH10**

Grade 304 Pressed stainless steel swivel castor with a 10mm bolt hole fitted with a white nylon wheel with a plain bore. Wheel diameter 50mm, tread width 24mm, overall height 74mm. Load capacity 50kg



Diameter (mm)	50
Fixing Option	Bolt Hole
Castor Type	Swivel
Height (mm)	74
Wheel Material	Nylon
Colour / Shore Hardness	White Nylon
Bearing Type	Plain
Tread (mm)	24
Fork Thickness (mm)	1.8
To Suit Fixing Bolt (mm)	10
Load Capacity (kg)	50
Temperature Resistance	-15 °C TO +80 °C
Head Dia (mm)	46
Swivel Radius (mm)	50