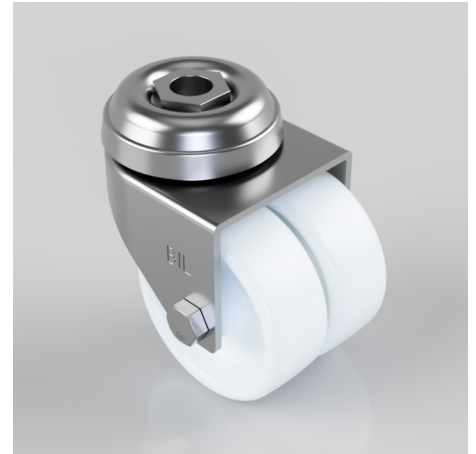


Nylon Bolt Hole Swivel Castor 50mm 60kg Load

Product code: 2BZD50NYBH10

Pressed steel twin wheel swivel castor with a 10mm bolt hole fixing fitted with 2 white nylon wheels with a plain bore. Wheel diameter 50mm, tread width 19mm x 2, overall height 70mm. Load capacity 60kg.



Diameter (mm)	50
Fixing Option	Bolt Hole
Castor Type	Swivel
Head Dia (mm)	45
Height (mm)	70
Bearing Type	Plain
Swivel Radius (mm)	49
Wheel Material	Nylon
Colour / Shore Hardness	White Nylon
Fork Thickness (mm)	2
Temperature Resistance	-15 °C TO +80 °C
To Suit Fixing Bolt (mm)	10
Tread (mm)	2 X 19
Load Capacity (kg)	60