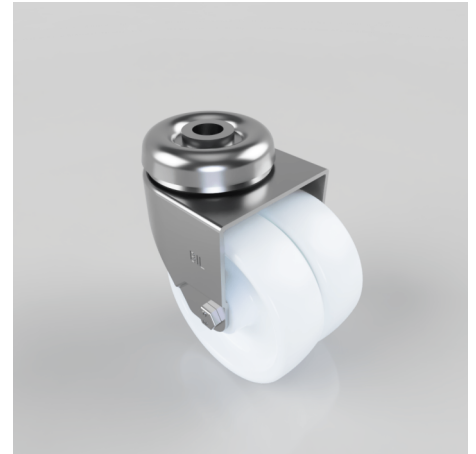


Nylon Bolt Hole Swivel Castor 75mm 100kg Load

Product code: 2BZD75NYBH12

Pressed steel twin wheel swivel castor with a 12mm bolt hole fixing fitted with 2 white nylon wheels with a Plain Bore. Wheel diameter 75mm, tread width 25mm x 2, overall height 100mm. Load capacity 100kg.



Diameter (mm)	75
Fixing Option	Bolt Hole
Castor Type	Swivel
Head Dia (mm)	57
Height (mm)	99
Bearing Type	Plain
Swivel Radius (mm)	70
Wheel Material	Nylon
Colour / Shore Hardness	White Nylon
Fork Thickness (mm)	2
Temperature Resistance	-15 °C TO +80 °C
To Suit Fixing Bolt (mm)	12
Tread (mm)	2 x 25
Load Capacity (kg)	90