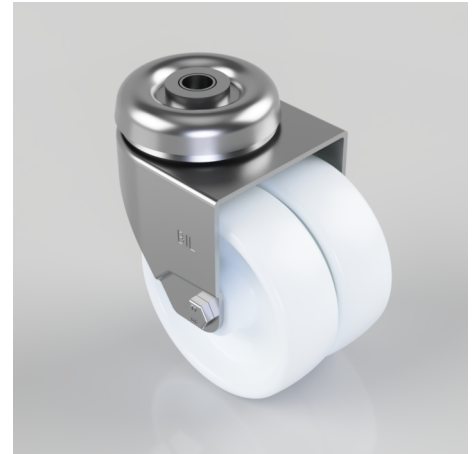


Nylon Bolt Hole Swivel Castor 75mm 90kg Load

Product code: 2BZD75NYBH10

Pressed steel twin wheel swivel castor with a 10mm bolt hole fixing fitted with 2 white nylon wheels with a plain bore. Wheel diameter 75mm, tread width 25mm x 2, overall height 100mm. Load capacity 90kg.



Diameter (mm)	75
Fixing Option	Bolt Hole
Castor Type	Swivel
Head Dia (mm)	57
Height (mm)	100
Bearing Type	Plain
Swivel Radius (mm)	70
Wheel Material	Nylon
Colour / Shore Hardness	White Nylon
Fork Thickness (mm)	2
Temperature Resistance	-15 °C TO +80 °C
To Suit Fixing Bolt (mm)	10
Tread (mm)	2 x 25
Load Capacity (kg)	90