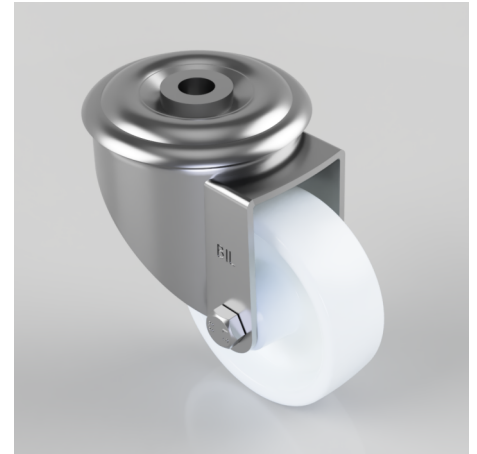


## Nylon Bolt Hole Swivel Castor 75mm 150kg Load

**Product code: BZMM75NYBH12**

Pressed steel swivel 80mm castor bracket with a 12mm bolt hole fixing fitted with a 75mm white nylon wheel with plain bore. Wheel diameter 75mm tread width 25mm, overall height 103mm. Load capacity 150kg.



Diameter (mm)	75
Castor Type	Swivel
Fixing Option	Bolt Hole
Height (mm)	103
Wheel Material	Nylon
Colour / Shore Hardness	White Nylon
Temperature Resistance	-30 °C TO +80 °C
Bearing Type	Plain
Load Capacity (kg)	150
Tread (mm)	25
Swivel Radius (mm)	76
Head Dia (mm)	76
Fork Thickness (mm)	2.5
To Suit Fixing Bolt (mm)	12