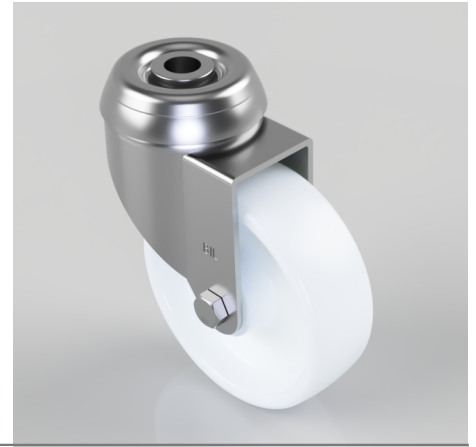


Nylon Bolt Hole Swivel Castor 75mm 70kg Load

Product code: BZD75NYBH10

Pressed steel swivel castor with a 10mm bolt hole fixing fitted with a white nylon wheel. Wheel diameter 75mm, tread width 25mm, overall height 97mm. Load capacity 70kg.



| | |
|--------------------------|------------------|
| Diameter (mm) | 75 |
| Fixing Option | Bolt Hole |
| Castor Type | Swivel |
| Head Dia (mm) | 48 |
| Height (mm) | 99 |
| Bearing Type | Plain |
| Swivel Radius (mm) | 66 |
| Wheel Material | Nylon |
| Colour / Shore Hardness | White Nylon |
| Fork Thickness (mm) | 1.5 |
| Temperature Resistance | -15 °C TO +80 °C |
| To Suit Fixing Bolt (mm) | 10 |
| Tread (mm) | 25 |
| Load Capacity (kg) | 70 |

BIL GROUP LTD

Porte Marsh Road, Calne, Wiltshire, SN11 9BW

Registered in England No: 2603821

VAT Reg: GB572705729

