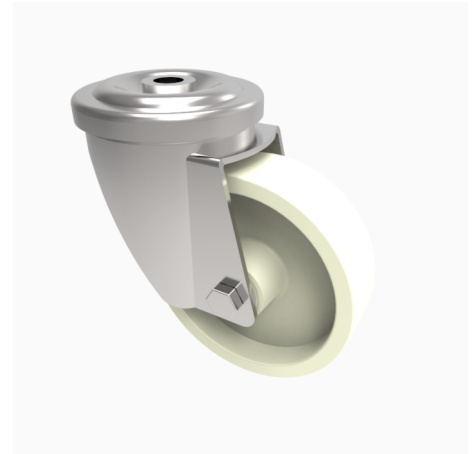


Nylon Bolt Hole Swivel Castor 80mm 220kg Load

Product code: SSMH80NYBH12HT

Grade 304 Stainless steel swivel castor with a 12mm bolt hole fixing fitted with a High Temp nylon wheel with a Plain Bore suitable up to 130 DegreeC. Wheel diameter 80mm, tread width 30mm, overall height 108mm. Load capacity 220kg.



Diameter (mm)	80
Fixing Option	Bolt Hole
Castor Type	Swivel
Head Dia (mm)	78
To Suit Fixing Bolt (mm)	12
Height (mm)	108
Bearing Type	Plain
Swivel Radius (mm)	78
Wheel Material	Nylon
Colour / Shore Hardness	White High Temperature Nylon
Temperature Resistance	-30 °C to +130 °C
Load Capacity (kg)	220
Tread (mm)	35
Fork Thickness (mm)	2.5