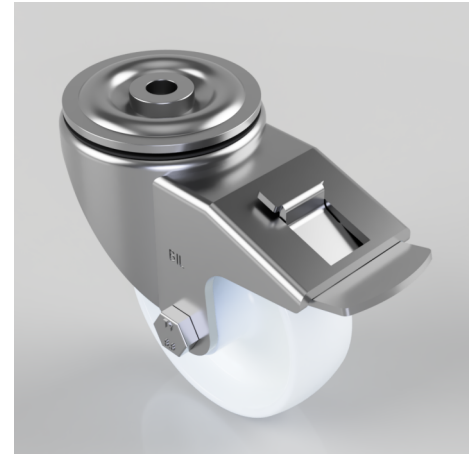


Nylon Bolt Hole Swivel Castor Brake 100mm 270kg Load

Product code: BZH100NYBH12SWB

Pressed steel swivel castor with a 12mm bolt hole fixing fitted with a white nylon wheel with a plain bore and total lock brake. Wheel diameter 100mm, tread width 32mm, overall height 128mm. Load capacity 270kg.



Diameter (mm)	100
Castor Type	Swivel with Total Lock Brake
Fixing Option	Bolt Hole
Height (mm)	128
Wheel Material	Nylon
Colour / Shore Hardness	White Nylon
Temperature Resistance	-30 °C TO +80 °C
Bearing Type	Plain
Load Capacity (kg)	270
Tread (mm)	32
Swivel Radius (mm)	120
Head Dia (mm)	76
Fork Thickness (mm)	4
To Suit Fixing Bolt (mm)	12