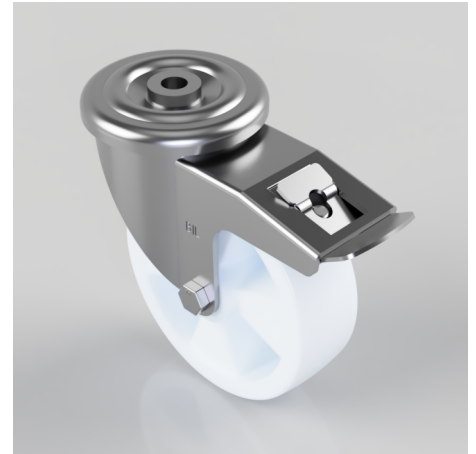


## Nylon Bolt Hole Swivel Castor Brake 160mm 500kg Load

**Product code: BZMM160NYBH16SWB**

Pressed steel swivel castor with a 16mm bolt hole fitted with a white nylon wheel with a Plain Bore and a total lock brake. Wheel diameter 150mm, tread width 50mm, overall height 193mm, Load capacity 500kg.



Diameter (mm)	160
Castor Type	Swivel with Total Lock Brake
Fixing Option	Bolt Hole
Height (mm)	193
Wheel Material	Nylon
Colour / Shore Hardness	White Nylon
Temperature Resistance	-30 °C TO +80 °C
Bearing Type	Plain
Load Capacity (kg)	500
Tread (mm)	50
Swivel Radius (mm)	168
Head Dia (mm)	114
Fork Thickness (mm)	4
To Suit Fixing Bolt (mm)	16