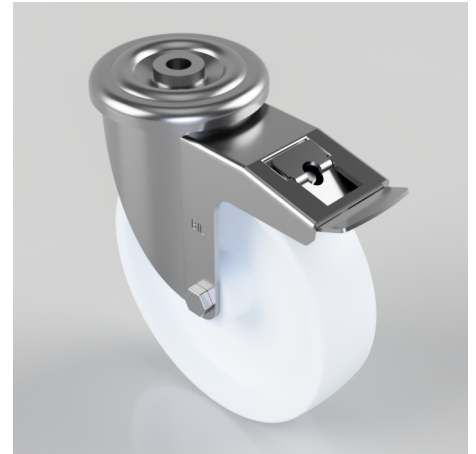


Nylon Bolt Hole Swivel Castor Brake 200mm 500kg Load

Product code: BZMM200NYBBH16SWB

Pressed steel swivel castor with a 16mm bolt hole fixing fitted with a white nylon wheel with a Plain Bore and a total lock brake. Wheel diameter 200mm, tread width 50mm, overall height 238mm, Load capacity 500kg.



Diameter (mm)	200
Castor Type	Swivel with Total Lock Brake
Fixing Option	Bolt Hole
Height (mm)	193
Wheel Material	Nylon
Colour / Shore Hardness	White Nylon
Temperature Resistance	-30 °C TO +80 °C
Bearing Type	Roller
Load Capacity (kg)	500
Tread (mm)	50
Swivel Radius (mm)	167
Head Dia (mm)	114
Fork Thickness (mm)	4
To Suit Fixing Bolt (mm)	16